

RETAIL OR DEVELOPMENT OPPORTUNITY

1905 MONROE ST, MADISON, WI

// EXECUTIVE SUMMARY



OFFERING SUMMARY

Sale Price:	\$1,150,000
Lot Size:	0.11 Acres
Building Size:	6,004 SF
Year Built:	1954
Renovated:	1998
Zoning:	TSS
Market:	Dane County
Cross Streets:	Monroe St and Harrison St
Traffic Count:	14,500

PROPERTY OVERVIEW

Owner is relocating business. Rare opportunity to own a piece of Monroe St! Currently a retail store but also a development opportunity in the middle of the busy Monroe Street shopping area. Extensive rebuild and expansion done in 1998. Building has three levels with a basement and handicap elevator/lift. Lots of retail space with great storage, offices and employee lunch room. \$10,000 matching grant may be available from City of Madison thru the facade redevelopment program.

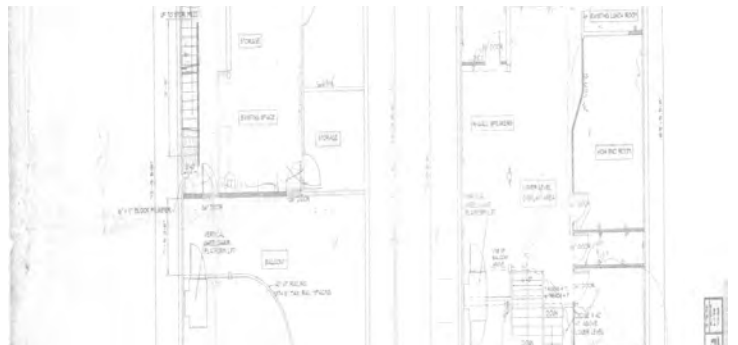
LOCATION OVERVIEW

On Monroe St near the corner of Harrison St

RETAIL OR DEVELOPMENT OPPORTUNITY

1905 MONROE ST, MADISON, WI

// ADDITIONAL PHOTOS



RETAIL OR DEVELOPMENT OPPORTUNITY

1905 MONROE ST, MADISON, WI

// ADDITIONAL PHOTOS



RETAIL OR DEVELOPMENT OPPORTUNITY

1905 MONROE ST, MADISON, WI

// RETAILER MAP



FOR MORE INFORMATION CONTACT:

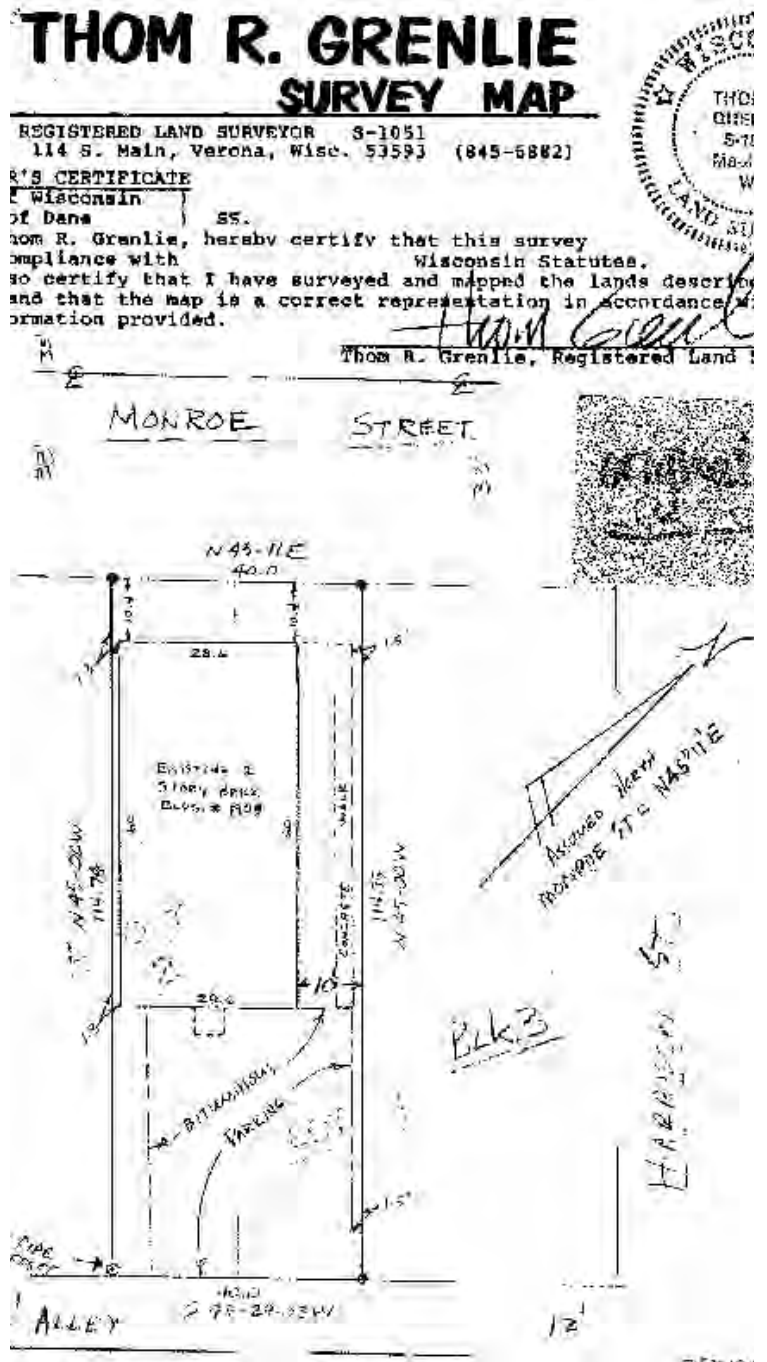
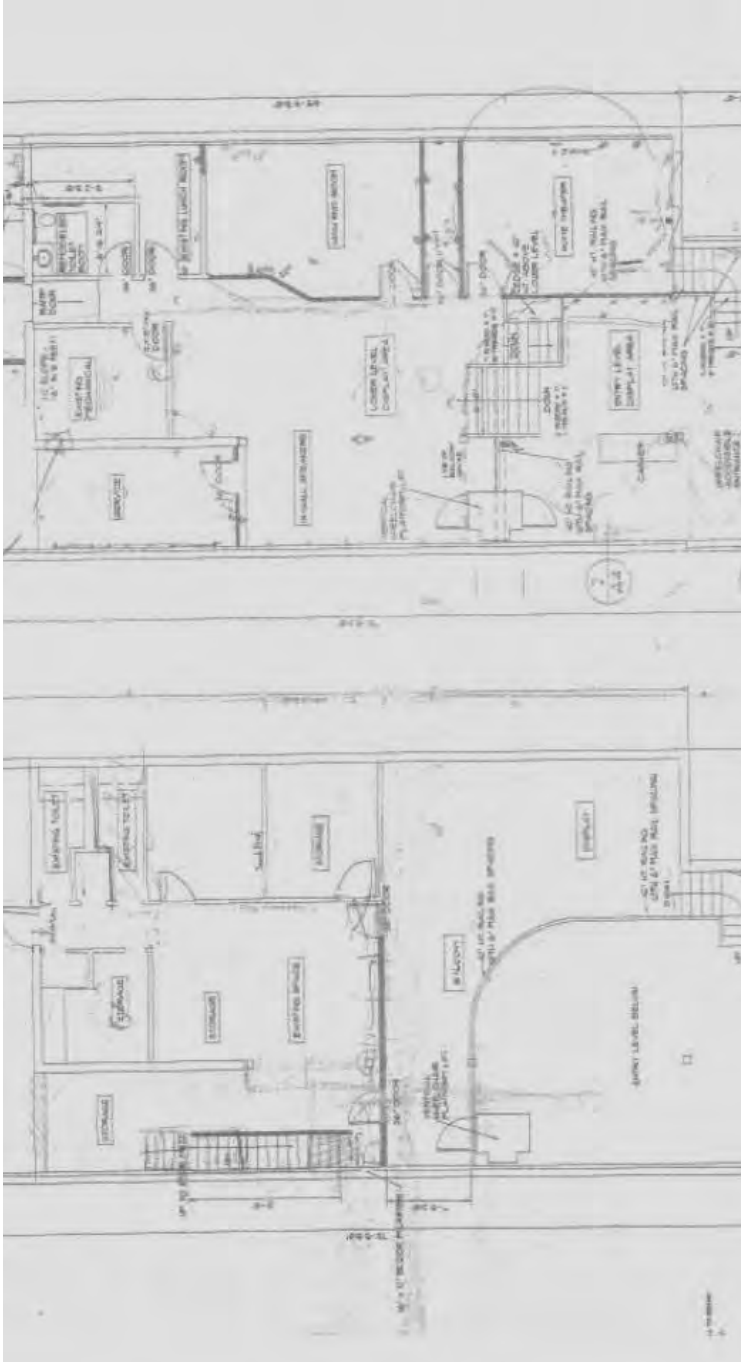
DAN ROSELIEP, CPM Managing Director | Partner
dan.roseliep@altuscre.com (P) 608.234.4482 (C) 608.669.4646

We obtained the information above from sources we believe to be reliable. However, we have not verified its accuracy and make no guarantee, warranty or representation about it. It is submitted subject to the possibility of errors, omissions, change of price, rental or other conditions, prior sale, lease or financing, or withdrawal without notice. We include projections, opinions, assumptions or estimates for example only, and they may not represent current or future performance of the property. You and your tax and legal advisors should conduct your own investigation of the property and transaction

RETAIL OR DEVELOPMENT OPPORTUNITY

1905 MONROE ST, MADISON, WI

// FLOOR PLANS



FOR MORE INFORMATION CONTACT:

DAN ROSELIEP, CPM Managing Director | Partner
 dan.roseliep@altuscre.com (P) 608.234.4482 (C) 608.669.4646

We obtained the information above from sources we believe to be reliable. However, we have not verified its accuracy and make no guarantee, warranty or representation about it. It is submitted subject to the possibility of errors, omissions, change of price, rental or other conditions, prior sale, lease or financing, or withdrawal without notice. We include projections, opinions, assumptions or estimates for example only, and they may not represent current or future performance of the property. You and your tax and legal advisors should conduct your own investigation of the property and transaction

RETAIL OR DEVELOPMENT OPPORTUNITY

1905 MONROE ST, MADISON, WI

// LOCATION MAPS



FOR MORE INFORMATION CONTACT:

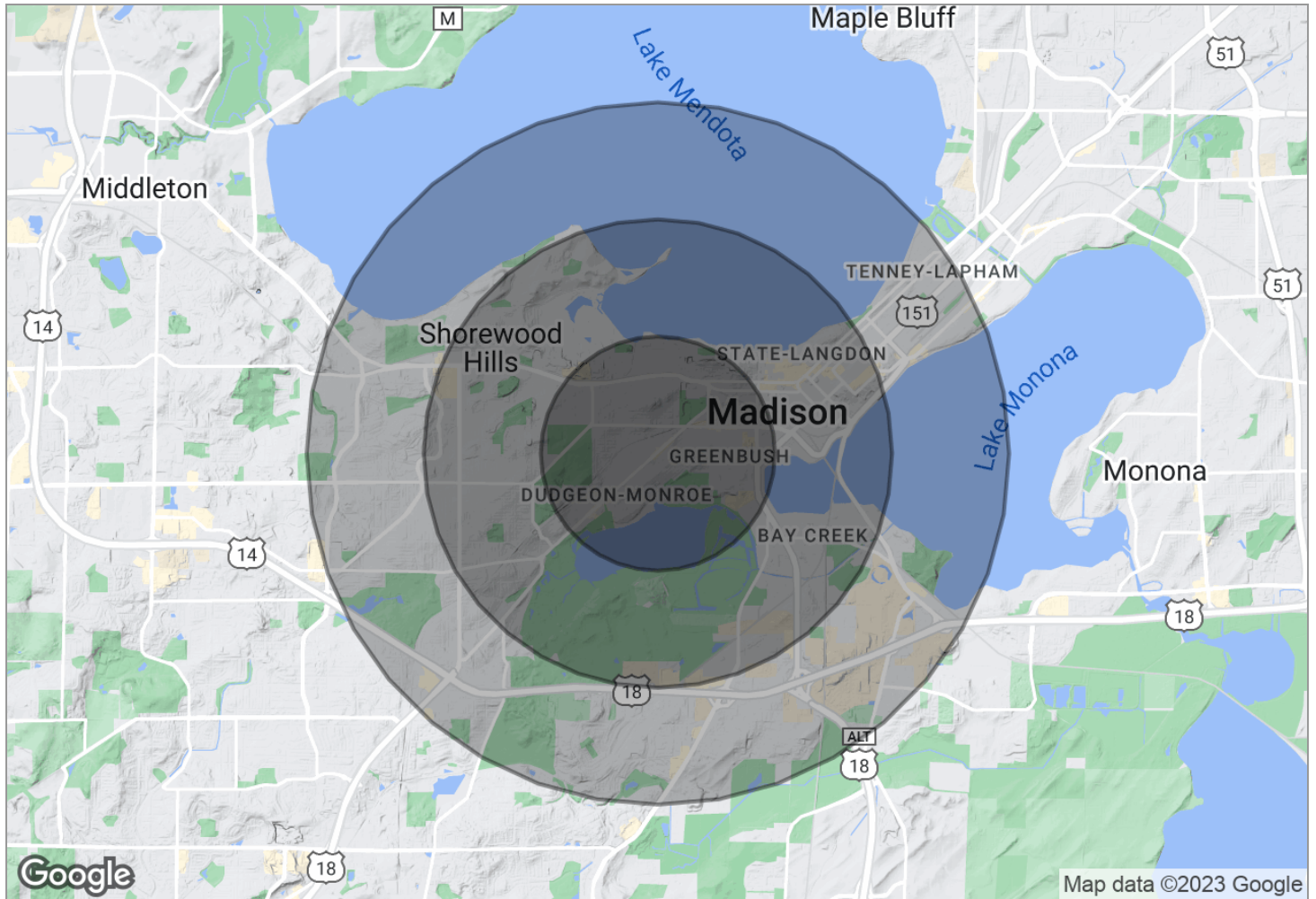
DAN ROSELIEP, CPM Managing Director | Partner
dan.roseliep@altuscre.com (P) 608.234.4482 (C) 608.669.4646

We obtained the information above from sources we believe to be reliable. However, we have not verified its accuracy and make no guarantee, warranty or representation about it. It is submitted subject to the possibility of errors, omissions, change of price, rental or other conditions, prior sale, lease or financing, or withdrawal without notice. We include projections, opinions, assumptions or estimates for example only, and they may not represent current or future performance of the property. You and your tax and legal advisors should conduct your own investigation of the property and transaction

RETAIL OR DEVELOPMENT OPPORTUNITY

1905 MONROE ST, MADISON, WI

// DEMOGRAPHICS MAP



POPULATION	1 MILE	2 MILES	3 MILES
TOTAL POPULATION	23,403	66,253	105,530
MEDIAN AGE	25.4	25.8	28.5
MEDIAN AGE (MALE)	24.9	25.8	28.3
MEDIAN AGE (FEMALE)	25.5	25.7	28.7
HOUSEHOLDS & INCOME	1 MILE	2 MILES	3 MILES
TOTAL HOUSEHOLDS	7,774	23,014	41,582
# OF PERSONS PER HH	3.0	2.9	2.5
AVERAGE HH INCOME	\$65,087	\$55,309	\$59,972
AVERAGE HOUSE VALUE	\$339,924	\$324,598	\$333,618

FOR MORE INFORMATION CONTACT:

DAN ROSELIEP, CPM Managing Director | Partner
dan.roseliep@altuscre.com (P) 608.234.4482 (C) 608.669.4646

We obtained the information above from sources we believe to be reliable. However, we have not verified its accuracy and make no guarantee, warranty or representation about it. It is submitted subject to the possibility of errors, omissions, change of price, rental or other conditions, prior sale, lease or financing, or withdrawal without notice. We include projections, opinions, assumptions or estimates for example only, and they may not represent current or future performance of the property. You and your tax and legal advisors should conduct your own investigation of the property and transaction

RETAIL OR DEVELOPMENT OPPORTUNITY

1905 MONROE ST, MADISON, WI

BROKER DISCLOSURE

WISCONSIN REALTORS® ASSOCIATION4801 Forest Run Road
Madison, Wisconsin 53704

Altus Comm R/E Inc

BROKER DISCLOSURE TO NON-RESIDENTIAL CUSTOMERS

1 Prior to negotiating on your behalf the Broker must provide you the following disclosure statement:

2 **BROKER DISCLOSURE TO CUSTOMERS**

3 You are a customer of the broker. The broker is either an agent of another party in the transaction or a subagent of another broker
4 who is the agent of another party in the transaction. The broker, or a salesperson acting on behalf of the broker, may provide
5 brokerage services to you. Whenever the broker is providing brokerage services to you, the broker owes you, the customer, the
6 following duties:

- 7 ■ The duty to provide brokerage services to you fairly and honestly.
- 8 ■ The duty to exercise reasonable skill and care in providing brokerage services to you.
- 9 ■ The duty to provide you with accurate information about market conditions within a reasonable time if you request it, unless
10 disclosure of the information is prohibited by law.
- 11 ■ The duty to disclose to you in writing certain material adverse facts about a property, unless disclosure of the information is
12 prohibited by law (**See Lines 47-55**).
- 13 ■ The duty to protect your confidentiality. Unless the law requires it, the broker will not disclose your confidential information or the
14 confidential information of other parties (**See Lines 22-39**).
- 15 ■ The duty to safeguard trust funds and other property the broker holds.
- 16 ■ The duty, when negotiating, to present contract proposals in an objective and unbiased manner and disclose the advantages and
17 disadvantages of the proposals.

18 Please review this information carefully. A broker or salesperson can answer your questions about brokerage services, but if you
19 need legal advice, tax advice, or a professional home inspection, contact an attorney, tax advisor, or home inspector.

20 This disclosure is required by section 452.135 of the Wisconsin statutes and is for information only. It is a plain-language summary of
21 a broker's duties to a customer under section 452.133 (1) of the Wisconsin statutes.

22 **CONFIDENTIALITY NOTICE TO CUSTOMERS**

23 BROKER WILL KEEP CONFIDENTIAL ANY INFORMATION GIVEN TO BROKER IN CONFIDENCE, OR ANY INFORMATION
24 OBTAINED BY BROKER THAT HE OR SHE KNOWS A REASONABLE PERSON WOULD WANT TO BE KEPT CONFIDENTIAL,
25 UNLESS THE INFORMATION MUST BE DISCLOSED BY LAW OR YOU AUTHORIZE THE BROKER TO DISCLOSE PARTICULAR
26 INFORMATION. A BROKER SHALL CONTINUE TO KEEP THE INFORMATION CONFIDENTIAL AFTER BROKER IS NO LONGER
27 PROVIDING BROKERAGE SERVICES TO YOU.

28 THE FOLLOWING INFORMATION IS REQUIRED TO BE DISCLOSED BY LAW:

- 29 1. MATERIAL ADVERSE FACTS, AS DEFINED IN SECTION 452.01 (5g) OF THE WISCONSIN STATUTES (**SEE LINES 47-55**).
- 30 2. ANY FACTS KNOWN BY THE BROKER THAT CONTRADICT ANY INFORMATION INCLUDED IN A WRITTEN INSPECTION
31 REPORT ON THE PROPERTY OR REAL ESTATE THAT IS THE SUBJECT OF THE TRANSACTION.
- 32 TO ENSURE THAT THE BROKER IS AWARE OF WHAT SPECIFIC INFORMATION YOU CONSIDER CONFIDENTIAL, YOU MAY LIST
33 THAT INFORMATION BELOW (**SEE LINES 35-36**). AT A LATER TIME, YOU MAY ALSO PROVIDE THE BROKER WITH OTHER
34 INFORMATION YOU CONSIDER TO BE CONFIDENTIAL.

35 **CONFIDENTIAL INFORMATION:** _____

36

37 **NON-CONFIDENTIAL INFORMATION** (The following information may be disclosed by Broker): _____

38

39 *(INSERT INFORMATION YOU AUTHORIZE THE BROKER TO DISCLOSE SUCH AS FINANCIAL QUALIFICATION INFORMATION.)*

40 **CONSENT TO TELEPHONE SOLICITATION**

41 I/We agree that the Broker and any affiliated settlement service providers (for example, a mortgage company or title company) may
42 call our/my home or cell phone numbers regarding issues, goods and services related to the real estate transaction until I/we
43 withdraw this consent in writing. **List Home/Cell Numbers:** _____

44 **SEX OFFENDER REGISTRY**

45 *Notice: You may obtain information about the sex offender registry and persons registered with the registry by contacting the
46 Wisconsin Department of Corrections on the Internet at: <http://offender.doc.state.wi.us/public/> or by phone at 608-240-5830.*

47 **DEFINITION OF MATERIAL ADVERSE FACTS**

48 A "material adverse fact" is defined in Wis. Stat. § 452.01(5g) as an adverse fact that a party indicates is of such significance, or that
49 is generally recognized by a competent licensee as being of such significance to a reasonable party, that it affects or would affect
50 the party's decision to enter into a contract or agreement concerning a transaction or affects or would affect the party's decision
51 about the terms of such a contract or agreement. An "adverse fact" is defined in Wis. Stat. § 452.01(1e) as a condition or occurrence
52 that a competent licensee generally recognizes will significantly and adversely affect the value of the property, significantly reduce
53 the structural integrity of improvements to real estate, or present a significant health risk to occupants of the property; or information
54 that indicates that a party to a transaction is not able to or does not intend to meet his or her obligations under a contract or
55 agreement made concerning the transaction.

No representation is made as to the legal validity of any provision or the adequacy of any provision in any specific transaction.
Copyright 2007 by Wisconsin REALTORS® Association

Altus Comm R/E Inc, 6527 Normandy Ln, Ste 201 Madison, WI 53719
Jeff Jansen

Produced with ZipForm® by zipLogix 18070 Fifteen Mile Road, Fraser, Michigan 48026 www.zipLogix.com

Drafted by Attorney Debra Peterson Conrad
Cancellation

Phone: 608-338-0055 Fax: 608-821-1402



altuscommercialrealestate.com

FOR MORE INFORMATION CONTACT:

DAN ROSELIEP, CPM Managing Director | Partner
dan.roseliep@altuscre.com (P) 608.234.4482 (C) 608.669.4646

We obtained the information above from sources we believe to be reliable. However, we have not verified its accuracy and make no guarantee, warranty or representation about it. It is submitted subject to the possibility of errors, omissions, change of price, rental or other conditions, prior sale, lease or financing, or withdrawal without notice. We include projections, opinions, assumptions or estimates for example only, and they may not represent current or future performance of the property. You and your tax and legal advisors should conduct your own investigation of the property and transaction.