



## 3001 WEST BELTLINE HIGHWAY – MADISON, WI

BUILDING	48,000 GSF, Four Floors, Class-A
LOCATION	Conveniently located on the Central Beltline with exposure to 150,000+ cars per day and close proximity to restaurants, bus line, bike path, fitness studio, health spa, and more.
AVAILABLE	First Floor – 11,850 RSF Fourth Floor – 3,312 RSF

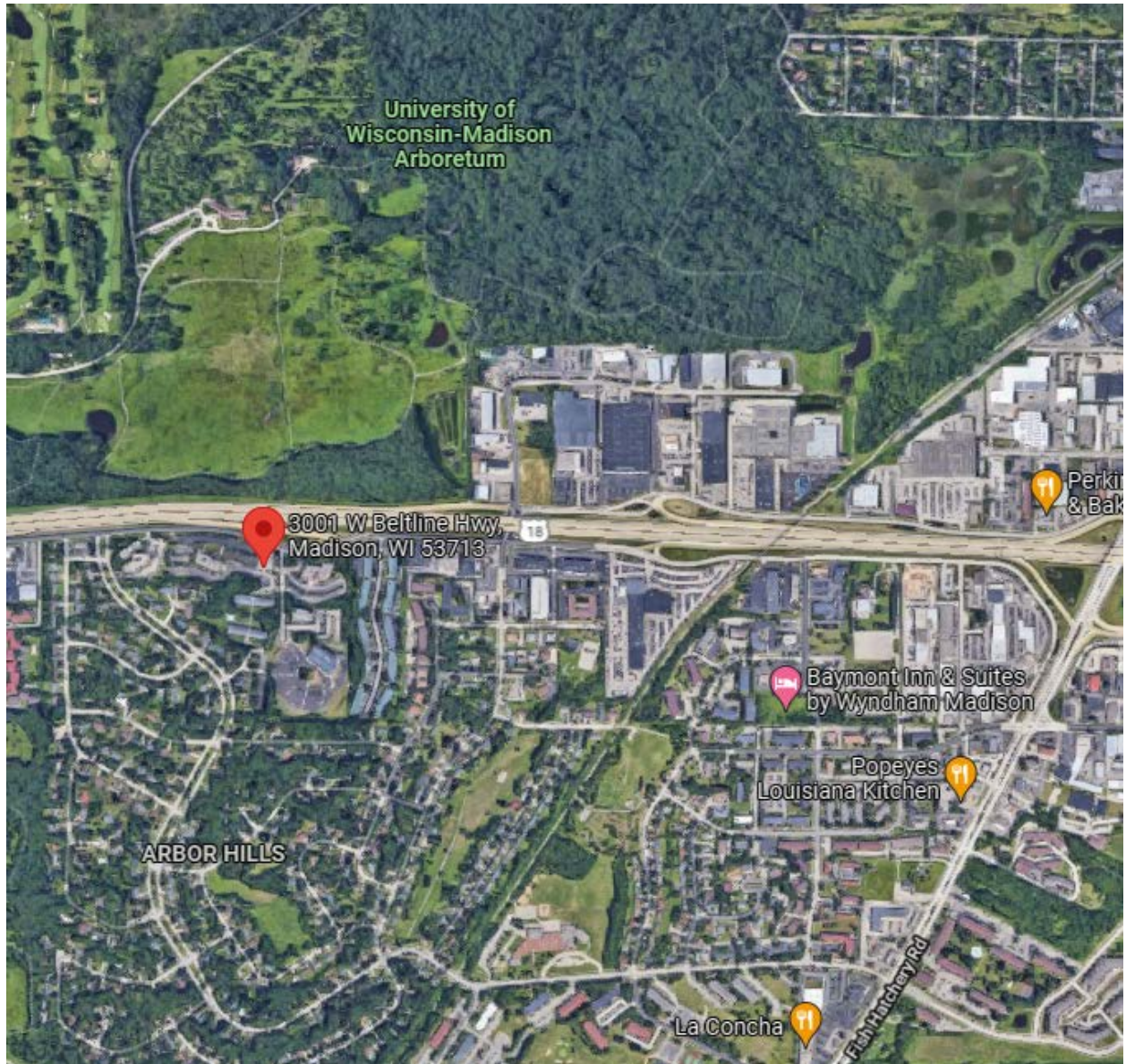
Brandi Zander  
VP of Brokerage & Development  
608-509-1002  
bzander@migllc.biz

MIG Commercial Real Estate  
3001 West Beltline Hwy, #202  
Madison, WI 53713  
www.migllc.biz



# MAP VIEW

3001 WEST BELTLINE HIGHWAY – MADISON, WI



Brandi Zander  
VP of Brokerage & Development  
608-509-1002  
bzander@migllc.biz

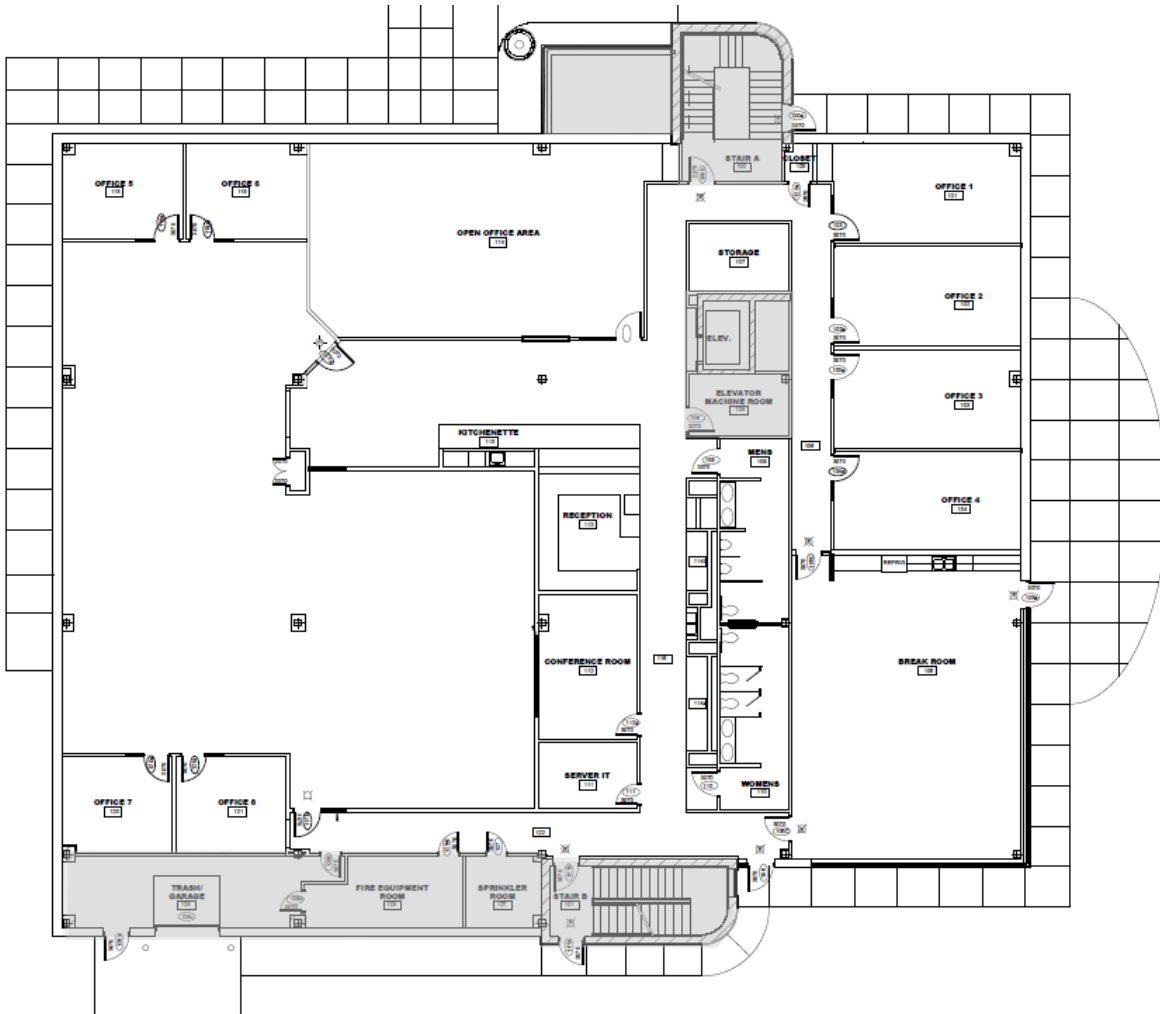
MIG Commercial Real Estate  
3001 West Beltline Hwy, #202  
Madison, WI 53713  
www.migllc.biz



# SPACE FOR LEASE

3001 WEST BELTLINE HIGHWAY – MADISON, WI

**FIRST FLOOR**  
10,773 USF / 11,850 RSF



Brandi Zander  
VP of Brokerage & Development  
608-509-1002  
bzander@migllc.biz

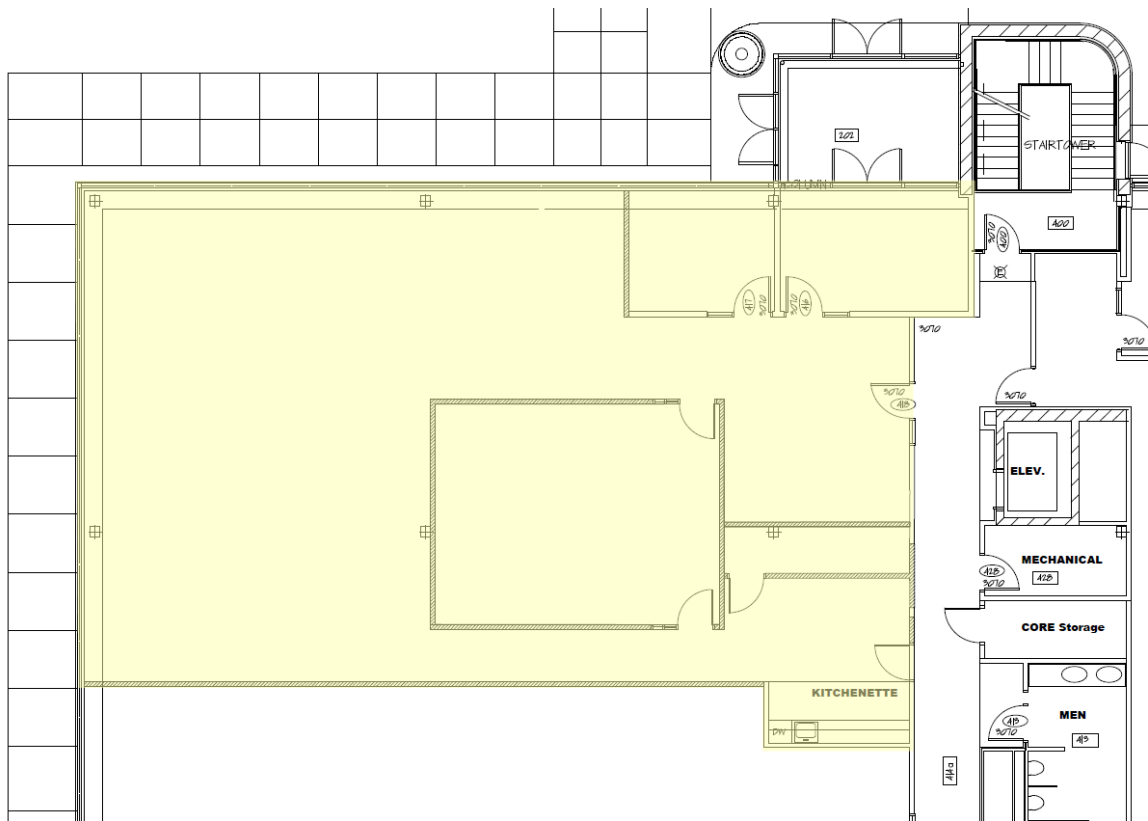
MIG Commercial Real Estate  
3001 West Beltline Hwy, #202  
Madison, WI 53713  
www.migllc.biz



# SPACE FOR LEASE

3001 WEST BELTLINE HIGHWAY – MADISON, WI

FOURTH FLOOR  
3,312 RSF



Brandi Zander  
VP of Brokerage & Development  
608-509-1002  
bzander@migllc.biz

MIG Commercial Real Estate  
3001 West Beltline Hwy, #202  
Madison, WI 53713  
www.migllc.biz