



Waunakee Business Center

Moravian Valley Road & Frank H. Street
Waunakee, WI 53597



262.524.0100 | SJPI.COM/WISCONSIN

About Waunakee Business Center

Waunakee Business Center consists of four office-warehouse buildings totaling more than 156,000 square feet, located 10 minutes north of the City of Madison, in Dane County, WI. The business center is located on Highway 19 one-mile west of the Highway 19 and Highway 113 Intersection, just 10 minutes from Dane County Airport and Middleton, WI. Fine dining and fast food restaurants, shopping and lodging are all within walking distance. The masonry building design and heavy landscaping project a high-end image while offering tenant prospects affordable and flexible floor plans to meet their office, warehouse,

For more information on Waunakee Business Center, visit: sjpi.com/waunakee

Below: Front exterior of 204 Moravian Valley Road, a single-story flex/R&D building

Flex/R&D/Office Space

201 Moravian Valley Road	37,730 SF
202 Moravian Valley Road	39,000 SF
204 Moravian Valley Road	39,000 SF
1100 Frank H. Street	40,733 SF

Flex/R&D/Office Specifications

Suite Sizes	1,300 up to 40,733 SF
Ceiling Height	16 ft. clear minimum
Parking	
201 Moravian Valley Road	4 spaces per 1,000 SF
202-204 Moravian Valley Road	220 spaces
1100 Frank H. Street	89 Spaces
Heat	Natural gas
Roof	EPDM rubber
Exterior Walls	Masonry
Loading	Dock or drive-in
Zoning	Light Industrial Uses





RAEMISCH ROAD

FRANK H. STREET

MORAVIN VALLEY ROAD

LILLIAN STREET

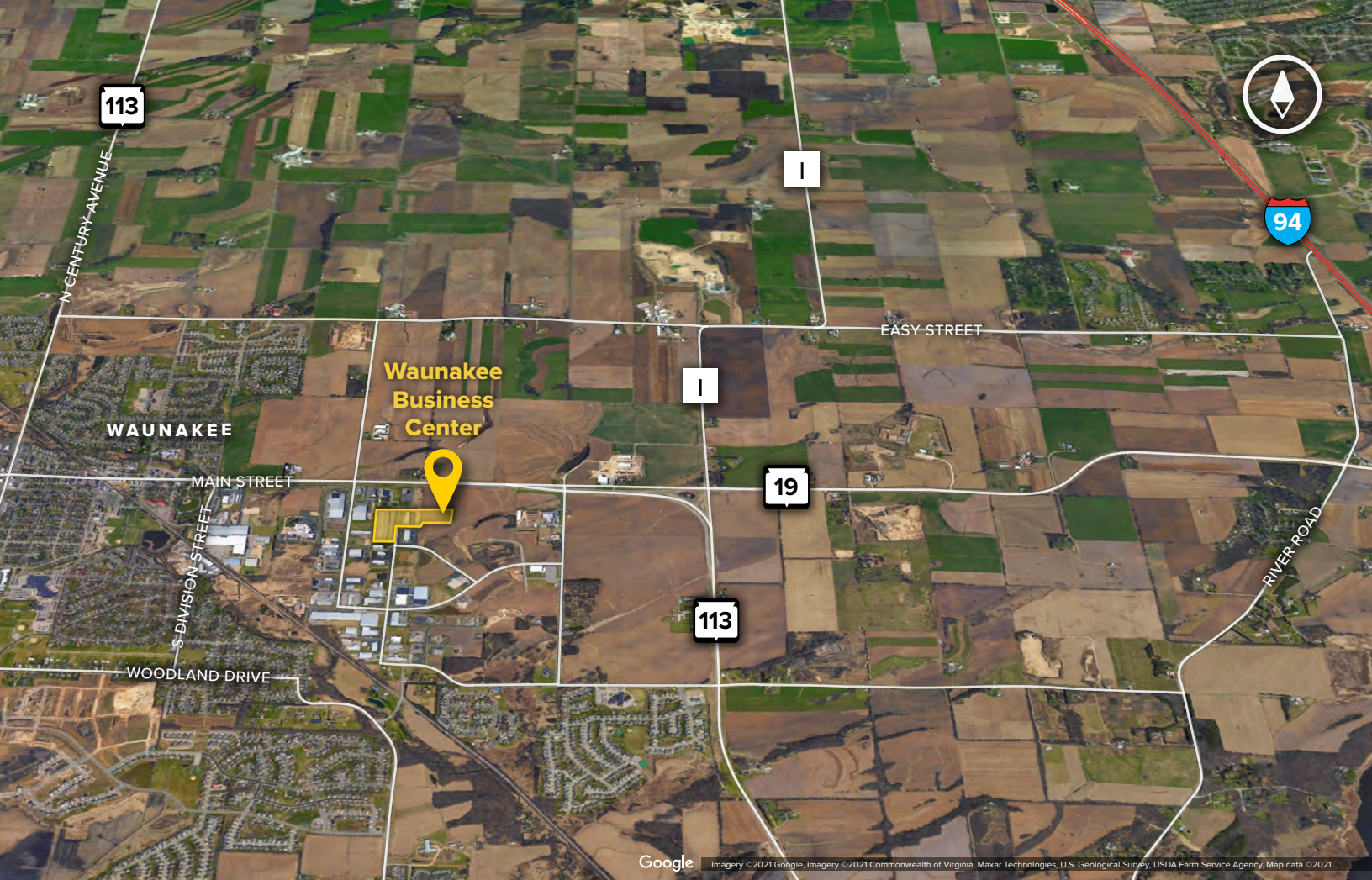
202 MORAVIAN VALLEY RD

204 MORAVIAN VALLEY RD

201 MORAVIAN VALLEY RD

1100 FRANK H. STREET





Contact Us

For additional leasing information or to schedule a tour, contact:

Greg Fax

Regional Partner, Wisconsin

gfx@sjpi.com | 262.524.0100

Wisconsin Regional Office:

2000 Pewaukee Road

Suite A

Waukesha, WI 53188

262.524.0100

SJPI.COM/WISCONSIN

About St. John Properties

St. John Properties Wisconsin owns and is developing more than 1.7 million square feet of commercial space across 16 business communities in Wisconsin.

St. John Properties, Inc. is a full-service real estate company headquartered in Baltimore, Maryland. The company owns, manages and has developed more than 22 million square feet of commercial real estate nationwide.

Connect with us @stjohnprop



This information contained in this publication has been obtained from sources believed to be reliable. St. John Properties makes no guarantee, warranty or representation about this information. Any projections, opinions, assumptions or estimates used here are for example only and do not represent the current or future performance of the property. Interested parties should conduct an independent investigation to determine whether the property suits their needs. REV 05/22