



10 EAST DOTY

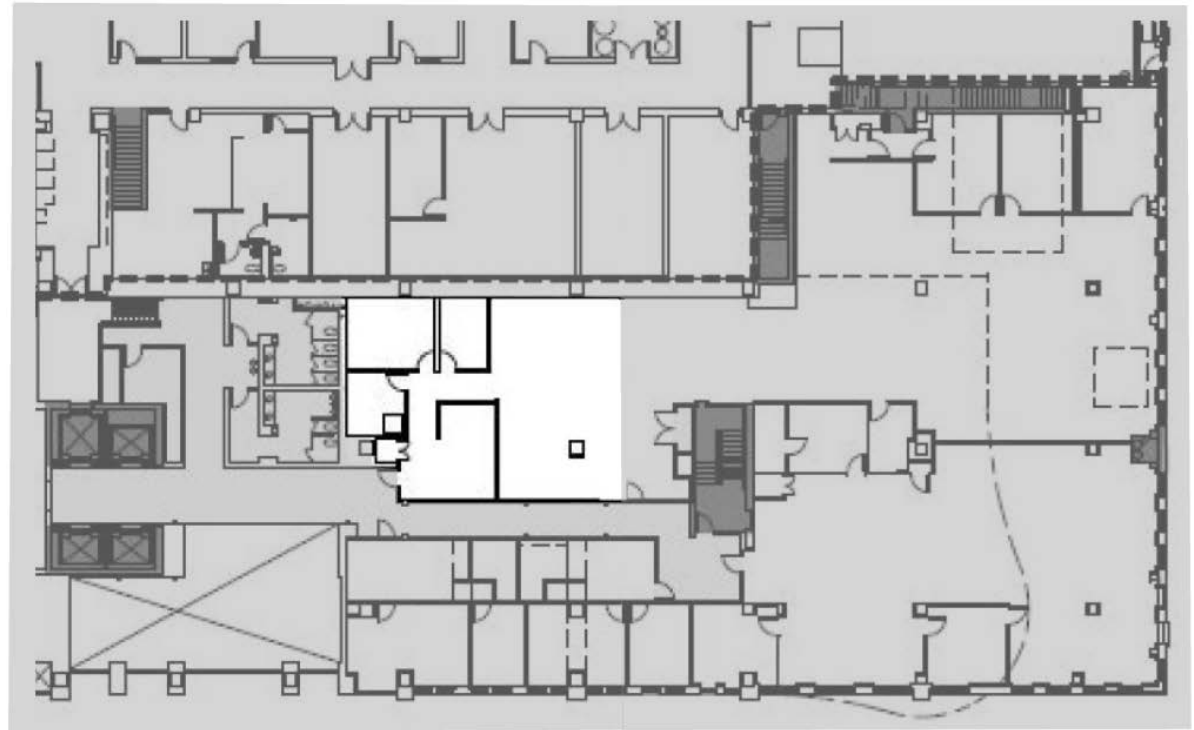
10 East Doty Street
Madison, WI 53703

SUITE 204 RSF 1,659

AVAILABILITY
Available Now

SUITE FEATURES

- Large open workspace for machines or workstations
- Front desk area to greet guests
- Several interior workspaces
- Partially built out



Sizes and Dimensions are approximate, actual dimensions may vary.



Urban Land Interests

608.251.0706

uli.com