



# 10 EAST DOTY

Madison, WI 53703

◆  
Suite 625 RSF 7,631

◆  
Availability

Available Now

◆  
Suite Features

13 Exterior, 2 Interior Offices

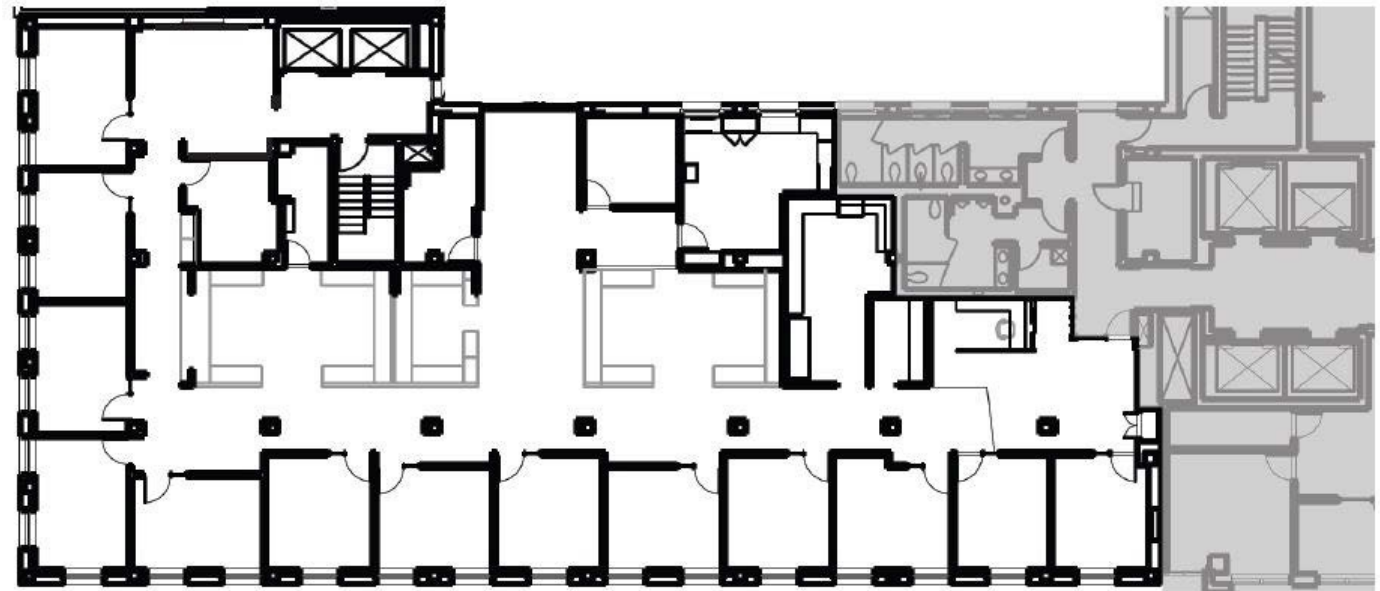
Conference Room

Reception Space/Guest Area

Open Workspace for Machines  
or Work Stations

Kitchen and Copy Room

Sizes and Dimensions are approximate, actual dimensions may vary.



Urban Land Interests

608.251.0706

uli.com

Virtual Tour

