



# 10 EAST DOTY

Madison, WI 53703

◆  
Suite 1002 RSF 3,399

◆  
Availability

Available with Notice

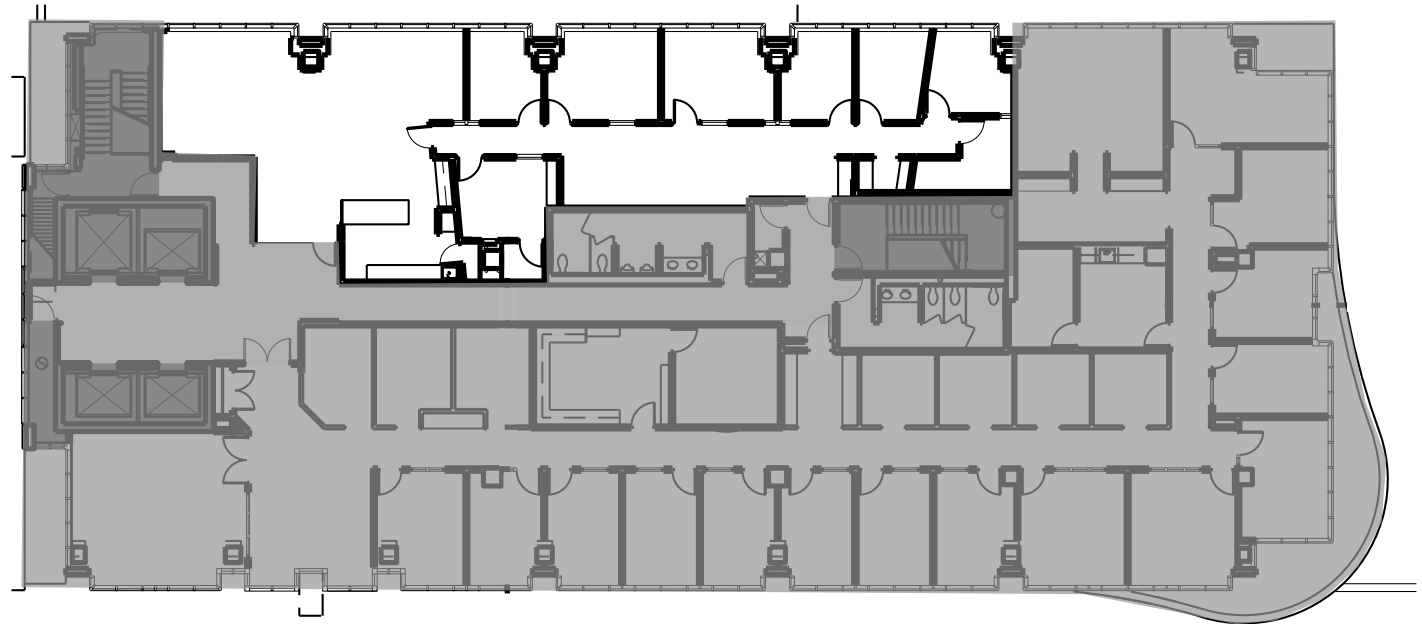
◆  
Suite Features

6 Exterior, 1 Interior Offices

Conference Room

Kitchen and Copy Room

Capitol View



Sizes and Dimensions are approximate, actual dimensions may vary.



Urban Land Interests

608.251.0706

uli.com