

For Sublease

10 East Doty Street Suite 621

Madison, WI 53703

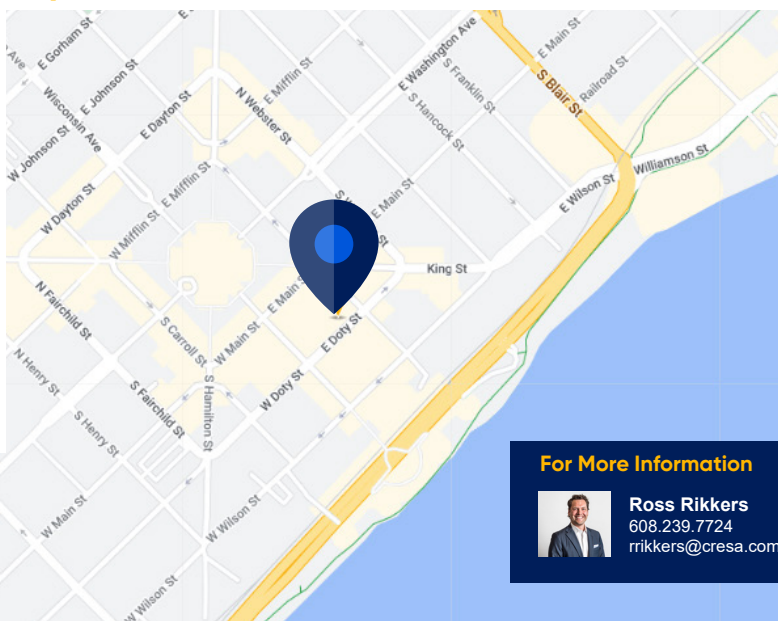
Space Profile

Available Space	Suite 621
Size	2,544 SF
Year Built	1998
Lease Expiration	3/31/2027
Availability	Immediate
Rent	\$31.52/RSF
Lease Type	Full Service Gross <i>All expenses included in the rental rate, including in-suite utilities and in-suite janitorial</i>
Renewal Options	Possible to extend the lease through 3/31/2031
Parking	5 employee parking stalls available at market rate in underground parking garage (number of parking stalls can be modified, as needed)

Features

- The building at 10 East Doty Street is part of the Block 89 Development with interior access to Martin Luther King Boulevard, Doty Street, Pinckney Street, and Main Street
- Block 89 includes several full service restaurants, cafes and other retailers
- Use of existing furniture by subtenant is negotiable

Map



For More Information

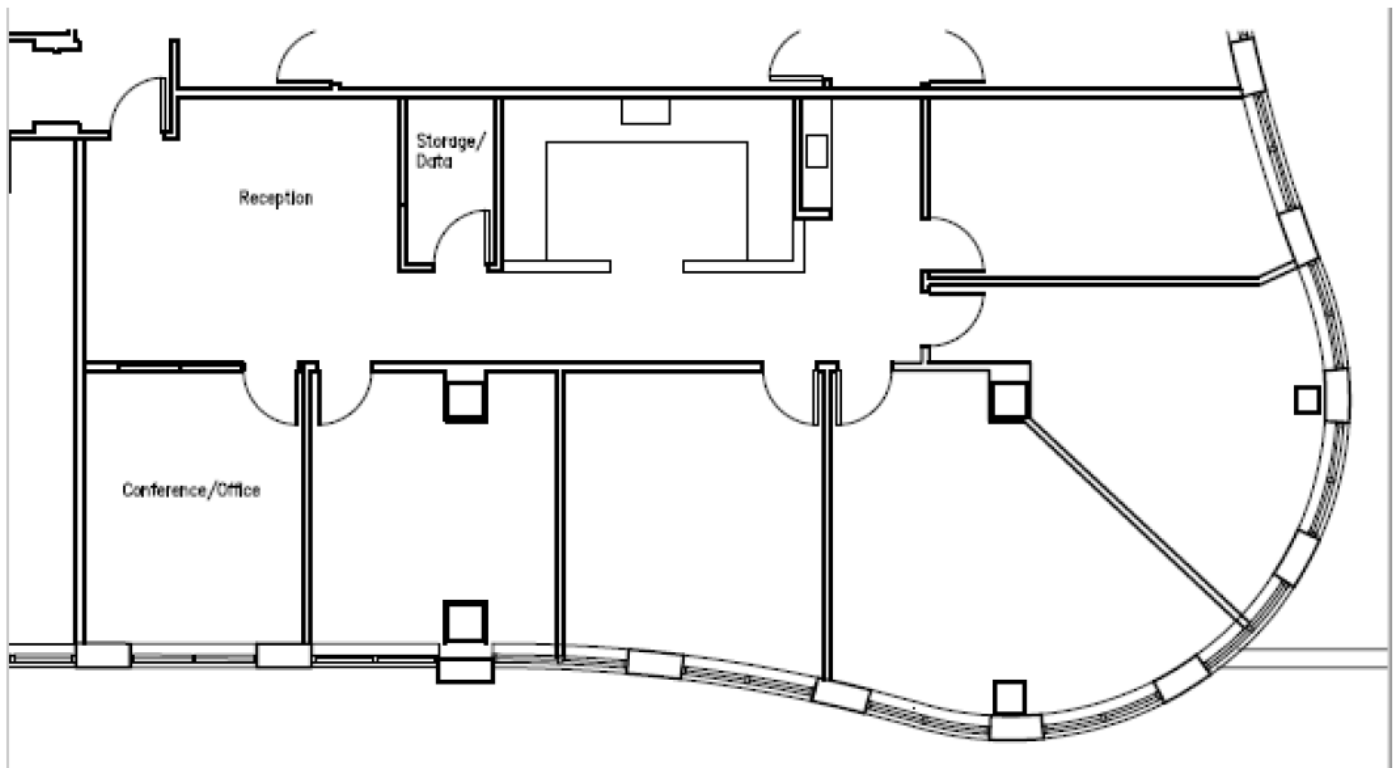


Ross Ridders
608.239.7724
ridders@cresa.com

Even though obtained from sources deemed reliable, no warranty or representation, express or implied, is made as to the accuracy of the information herein, and it is subject to errors, omissions, change of price, rental or other conditions, withdrawal without notice, and to any special listing conditions imposed by our principals.

cresa

Floorplan - Suite 621



For More Information

Cresa
613 Williamson Street
Suite 210
Madison, WI 53703
cresa.com/madison



Ross Ridders
608.239.7724
rridders@cresa.com



10 East Doty Street Suite 621 Madison, WI 53703



Cresa © 2019. All rights reserved. The information contained in this document has been obtained from sources believed reliable. While Cresa does not doubt its accuracy, Cresa has not verified it and makes no guarantee, warranty, or representation about it. It is your responsibility to independently confirm its accuracy and completeness. Any projections, opinions, assumptions or estimates used are for example only and do not represent the current or future performance of the property. The value of this transaction to you depends on tax and other factors which should be evaluated by your tax, financial and legal advisors. You and your advisors should conduct a careful, independent investigation of the property to determine to your satisfaction the suitability of the property for your needs.



**10 East Doty Street
Suite 621**
Madison, WI 53703



Cresa © 2019. All rights reserved. The information contained in this document has been obtained from sources believed reliable. While Cresa does not doubt its accuracy, Cresa has not verified it and makes no guarantee, warranty, or representation about it. It is your responsibility to independently confirm its accuracy and completeness. Any projections, opinions, assumptions or estimates used are for example only and do not represent the current or future performance of the property. The value of this transaction to you depends on tax and other factors which should be evaluated by your tax, financial and legal advisors. You and your advisors should conduct a careful, independent investigation of the property to determine to your satisfaction the suitability of the property for your needs.