



33 EAST MAIN

Madison, WI 53703

Suite **30X** RSF **5,298**

Availability

Available Now

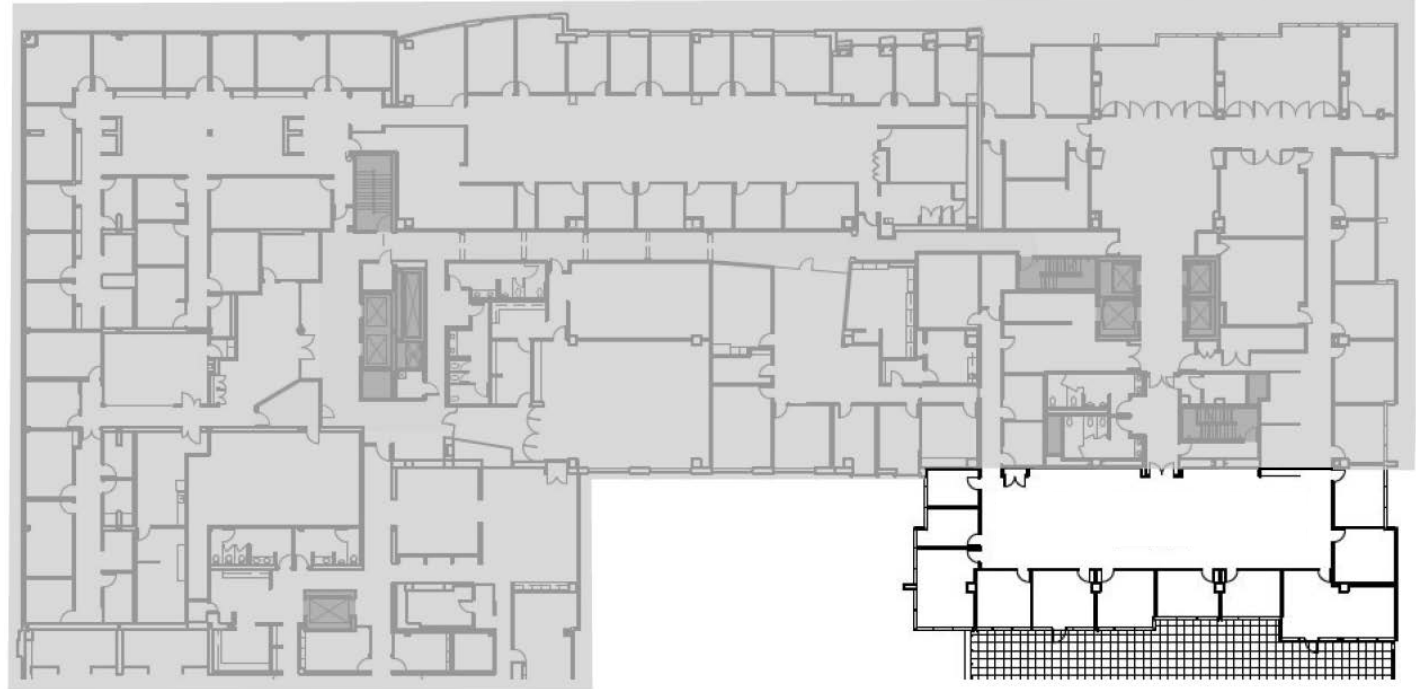
Suite Features

10 Exterior Offices

Conference Room

Large Open Space for
Workstations or Equipment

Terrace Access



Sizes and Dimensions are approximate, actual dimensions may vary.



Urban Land Interests

608.251.0706

uli.com