

701 East Washington Avenue Madison, WI 53703



for lease

Office Space Available Now:

Unique downtown office space at 701 East Washington Avenue - near Breese Stevens Field, The Sylvee & Festival Foods. Lunch & dinner options available in the building.

- **Inviting Open Areas & Offices**
- **Ample Shelving and Storage**
- **High Ceilings**
- **Attractive Finishes**



MOVE-IN READY OFFICE SPACE!

Suite LL2, LL3 & LL4 offer spaces of Approx. 135 SF - up to a total of 1,484 Usable Sq. Ft. of Office Space.

Sublease from now through 7/31/2025 or lease for a longer term.

Parking Available for \$60/month/stall!

Some Office Furniture Available.

CONTACT



Janine Punzel, CCIM | jkpunzel@360cres.com | 608.212.8336 (c)

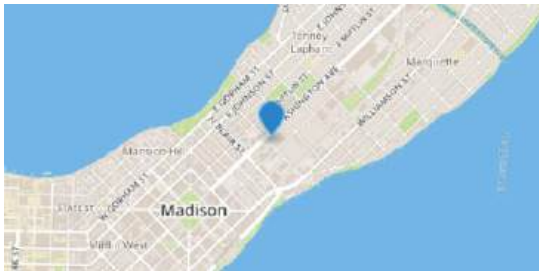
816 Walsh Road, Madison, WI 53714 | 608.807.0660 (o)



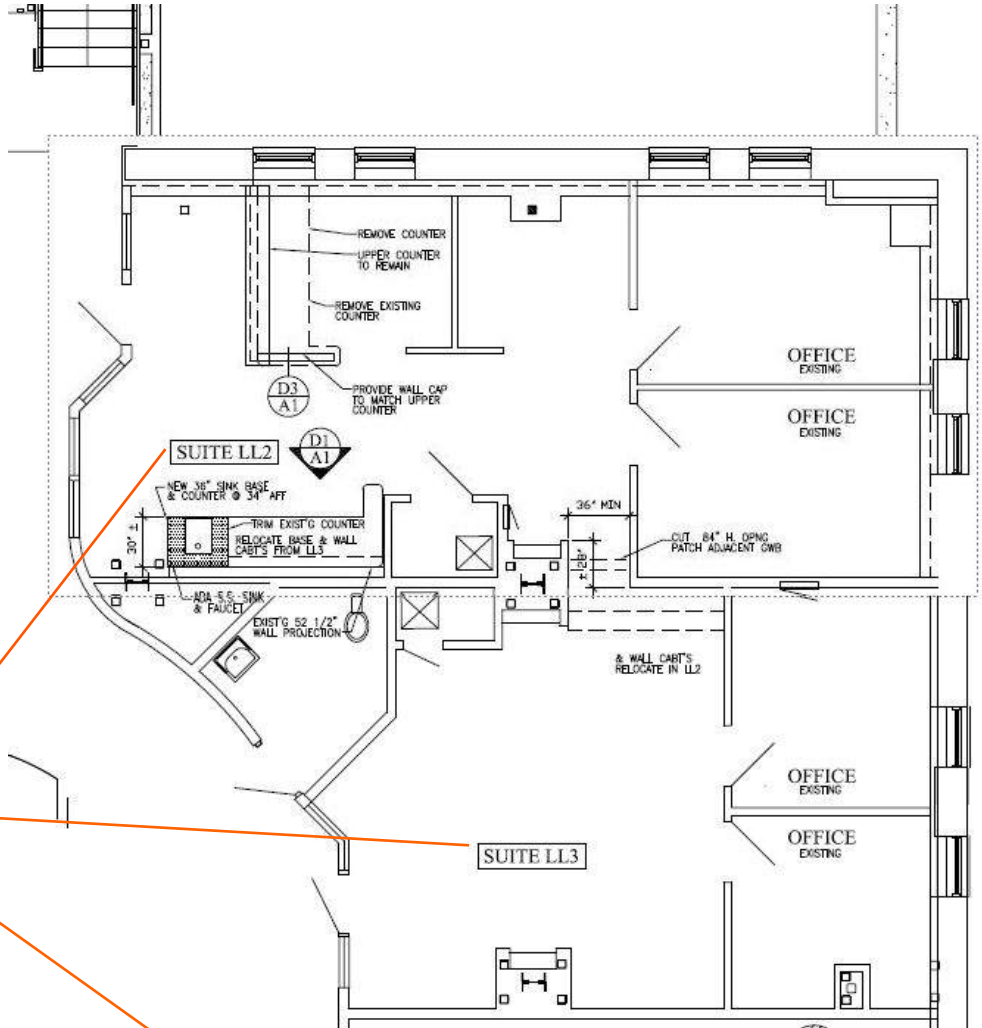
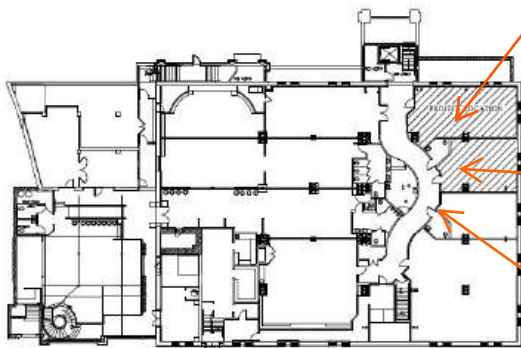
701 East Washington Avenue Madison, WI 53703

Spaces available on Lower Level - LL2, LL3, & LL4

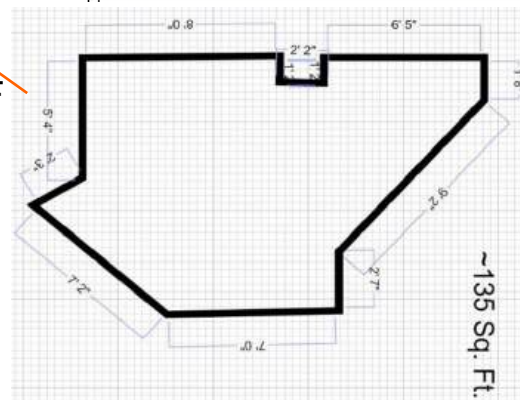
701 E. Washington Avenue is located on the isthmus; only 7 blocks from the Capitol Square



Subleases - starting at Approx. 135 Usable Sq. Ft. up to 1,484 Usable Sq. Ft. for all 3 spaces!



Suite LL4
Approx. 135 USF
\$350/Month
Negotiable

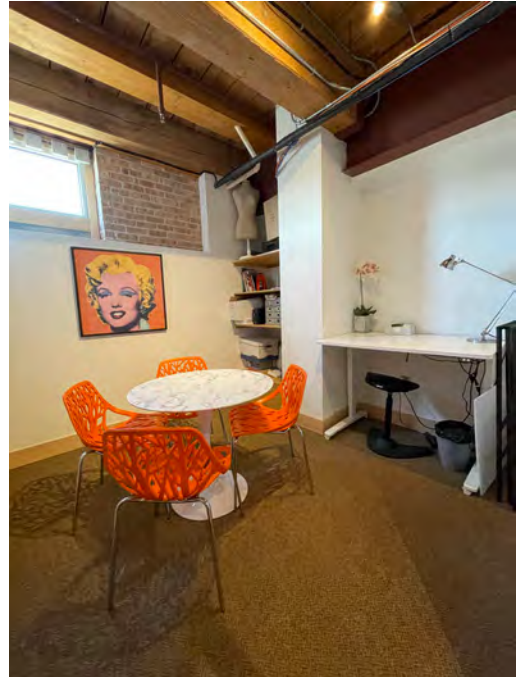
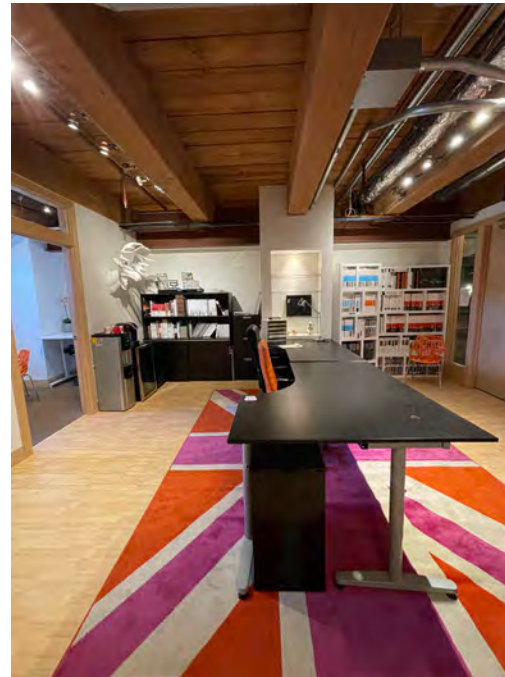
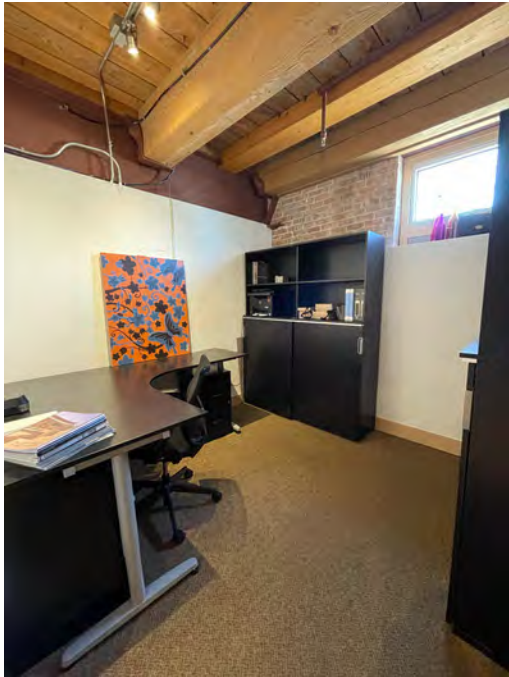
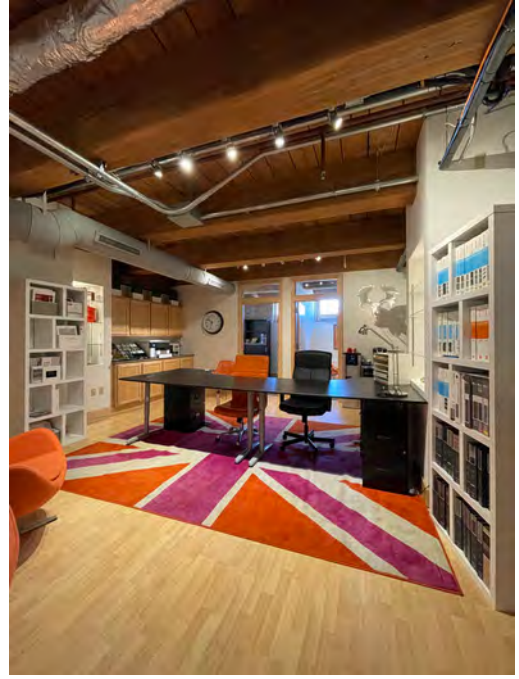


CONTACT Janine Punzel, CCIM | jkpunzel@360cres.com | 608.212.8336 (c)
816 Walsh Road, Madison, WI 53714 | 608.807.0660 (o)



701 East Washington Avenue Madison, WI 53703

Suite LL3 - Approx. 554 Usable Square Feet for \$1,000/month



CONTACT



Janine Punzel, CCIM | jkpunzel@360cres.com | 608.212.8336 (c)

816 Walsh Road, Madison, WI 53714 | 608.807.0660 (o)



701 East Washington Avenue Madison, WI 53703

Suite LL2 - Approx. 795 Usable Square Feet for \$1,300/month



CONTACT



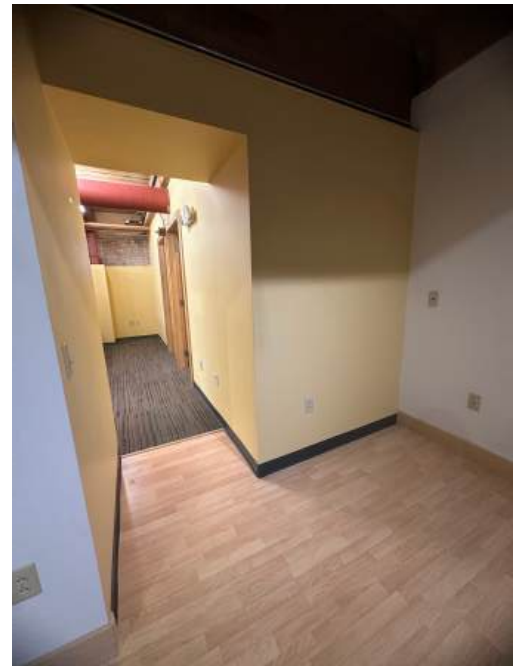
Janine Punzel, CCIM | jkpunzel@360cres.com | 608.212.8336 (c)

816 Walsh Road, Madison, WI 53714 | 608.807.0660 (o)



701 East Washington Avenue Madison, WI 53703

Suite LL2 - Approx. 795 Usable Square Feet for \$1,300/month



CONTACT



Janine Punzel, CCIM | jkpunzel@360cres.com | 608.212.8336 (c)

816 Walsh Road, Madison, WI 53714 | 608.807.0660 (o)

DISCLOSURE TO NON-RESIDENTIAL CUSTOMERS

1 Prior to negotiating on your behalf the brokerage firm, or an agent associated with the firm, must provide you the
2 following disclosure statement:

3 **DISCLOSURE TO CUSTOMERS** You are a customer of the brokerage firm (hereinafter Firm). The Firm is either an agent
4 of another party in the transaction or a subagent of another firm that is the agent of another party in the transaction. A
5 broker or a salesperson acting on behalf of the Firm may provide brokerage services to you. Whenever the Firm is
6 providing brokerage services to you, the Firm and its brokers and salespersons (hereinafter Agents) owe you, the
7 customer, the following duties:

- 8 (a) The duty to provide brokerage services to you fairly and honestly.
- 9 (b) The duty to exercise reasonable skill and care in providing brokerage services to you.
- 10 (c) The duty to provide you with accurate information about market conditions within a reasonable time if you request
11 it, unless disclosure of the information is prohibited by law.
- 12 (d) The duty to disclose to you in writing certain Material Adverse Facts about a property, unless disclosure of the
13 information is prohibited by law (see lines 42-51).
- 14 (e) The duty to protect your confidentiality. Unless the law requires it, the Firm and its Agents will not disclose your
15 confidential information or the confidential information of other parties (see lines 23-41).
- 16 (f) The duty to safeguard trust funds and other property held by the Firm or its Agents.
- 17 (g) The duty, when negotiating, to present contract proposals in an objective and unbiased manner and disclose the
18 advantages and disadvantages of the proposals.

19 Please review this information carefully. An Agent of the Firm can answer your questions about brokerage services,
20 but if you need legal advice, tax advice, or a professional home inspection, contact an attorney, tax advisor, or home
21 inspector. This disclosure is required by section 452.135 of the Wisconsin statutes and is for information only. It is a
22 plain-language summary of the duties owed to a customer under section 452.133(1) of the Wisconsin statutes.

23 **CONFIDENTIALITY NOTICE TO CUSTOMERS** The Firm and its Agents will keep confidential any information given to the
24 Firm or its Agents in confidence, or any information obtained by the Firm and its Agents that a reasonable person
25 would want to be kept confidential, unless the information must be disclosed by law or you authorize the Firm to
26 disclose particular information. The Firm and its Agents shall continue to keep the information confidential after the
27 Firm is no longer providing brokerage services to you.

- 28 The following information is required to be disclosed by law:
- 29 1. Material Adverse Facts, as defined in Wis. Stat. § 452.01(5g) (see lines 42-51).
 - 30 2. Any facts known by the Firm or its Agents that contradict any information included in a written inspection
31 report on the property or real estate that is the subject of the transaction.

32 To ensure that the Firm and its Agents are aware of what specific information you consider confidential, you may
33 list that information below (see lines 35-41) or provide that information to the Firm or its Agents by other means. At a
34 later time, you may also provide the Firm or its Agents with other Information you consider to be confidential.

35 **CONFIDENTIAL INFORMATION:** _____
36 _____
37 _____

38 **NON-CONFIDENTIAL INFORMATION** (the following information may be disclosed by the Firm and its Agents): _____
39 _____
40 _____
41 _____ (Insert information you authorize to be disclosed, such as financial qualification information.)

42 **DEFINITION OF MATERIAL ADVERSE FACTS**
43 A "Material Adverse Fact" is defined in Wis. Stat. § 452.01(5g) as an Adverse Fact that a party indicates is of such
44 significance, or that is generally recognized by a competent licensee as being of such significance to a reasonable
45 party, that it affects or would affect the party's decision to enter into a contract or agreement concerning a transaction
46 or affects or would affect the party's decision about the terms of such a contract or agreement.

47 An "Adverse Fact" is defined in Wis. Stat. § 452.01(1e) as a condition or occurrence that a competent licensee
48 generally recognizes will significantly and adversely affect the value of the property, significantly reduce the structural
49 integrity of improvements to real estate, or present a significant health risk to occupants of the property; or information
50 that indicates that a party to a transaction is not able to or does not intend to meet his or her obligations under a
51 contract or agreement made concerning the transaction.

52 **NOTICE ABOUT SEX OFFENDER REGISTRY** You may obtain information about the sex offender registry and persons
53 registered with the registry by contacting the Wisconsin Department of Corrections on the Internet at
54 <http://www.doc.wi.gov> or by telephone at 608-240-5830.