



**For Lease**

6720 Frank Lloyd Wright Ave  
Middleton, WI 53562

**Modern Office Space For Lease**

Available Space	3,358 SF
Floor	First floor
Parking	Ample
Expenses Not Included	In-suite janitorial and electric
Lease Rate	\$24.75 PSF MG

**Contact Us**

**Chris Richards**  
Partner  
+1 608 628 5895  
chris.richards@colliers.com

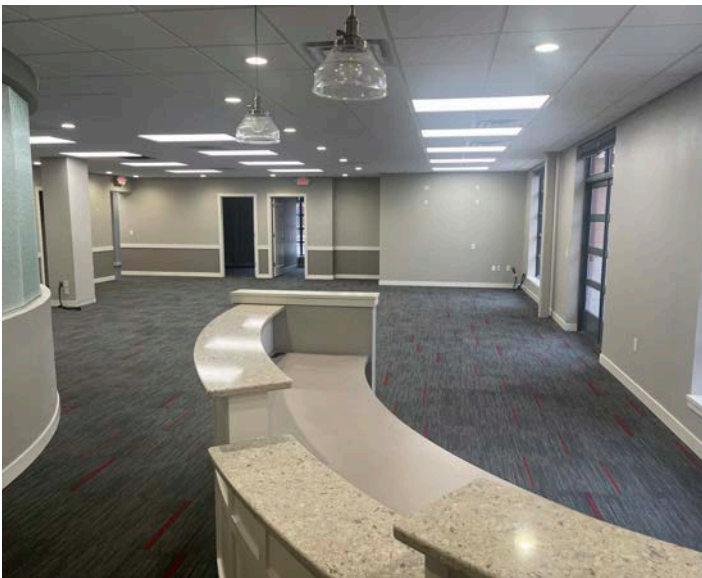
**Colin McLandsborough**  
Real Estate Advisor  
+1 262 309 5597  
colin.mclandsborough@colliers.com

**Colliers | Wisconsin**  
316 W Washington Ave, suite 925  
Madison, WI 53703  
P: +1 608 826 9500  
colliers.com

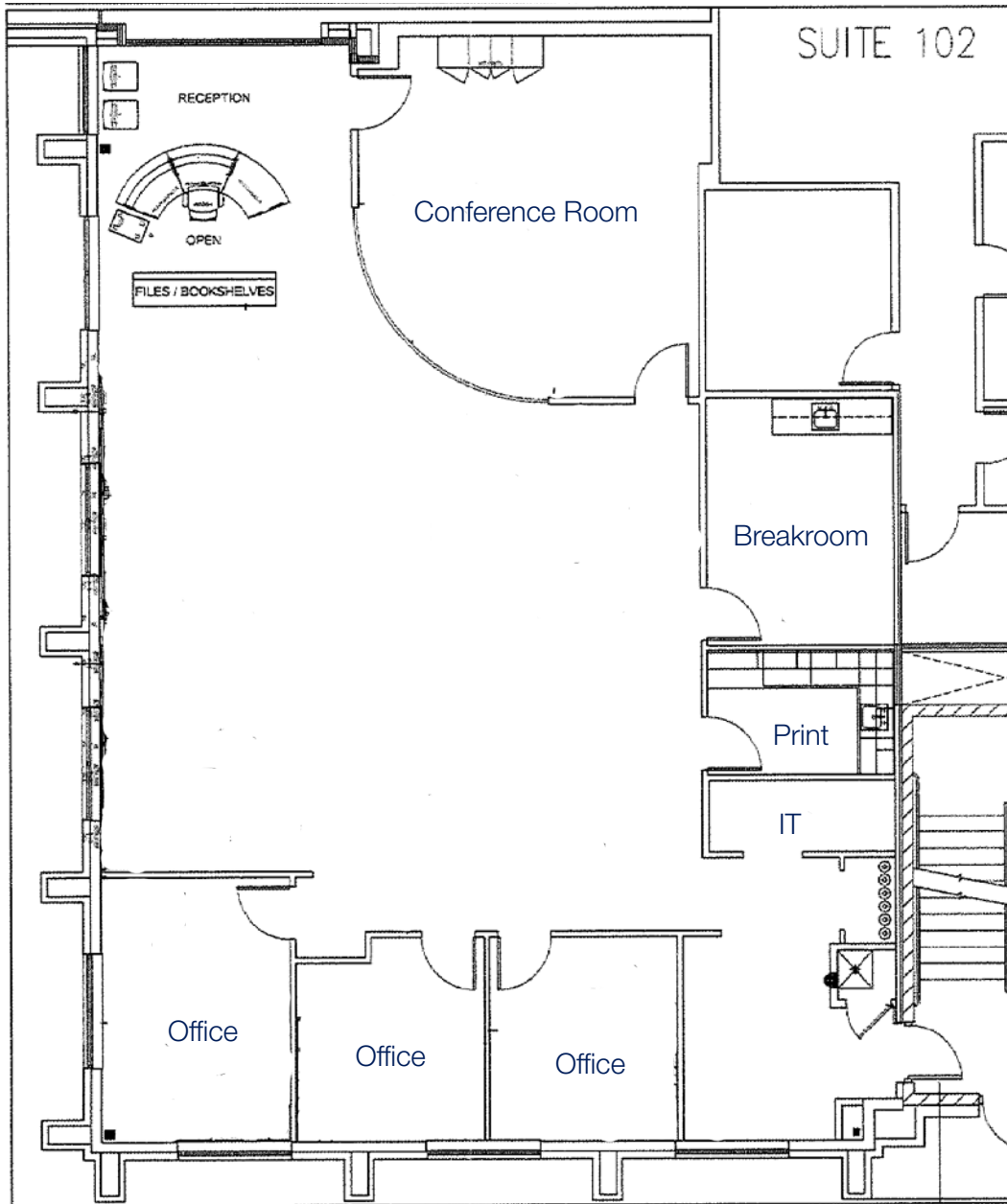
## Property Highlights

- 1st floor space.
- High level finishes.
- Building signage potential.
- Urban-Suburban setting with coffee, lunch, dinner & cocktails less than a 1-minute walk away.
- Shared fitness room with showers.
- Abundant off street parking.
- Storage Available – 1,000 SF to 5,000 SF - \$9.00 Gross.

## Interior Photos



Floor Plan





## Location





# For Lease | 6720 Frank Lloyd Wright Ave



## Drive Times from 6720 Frank Lloyd Wright



Capitol Square:  
15 Minutes, 7.4 Miles



UW-Madison:  
13 Minutes, 5.5 Miles



Dane County Regional Airport:  
18 Minutes, 11 Miles

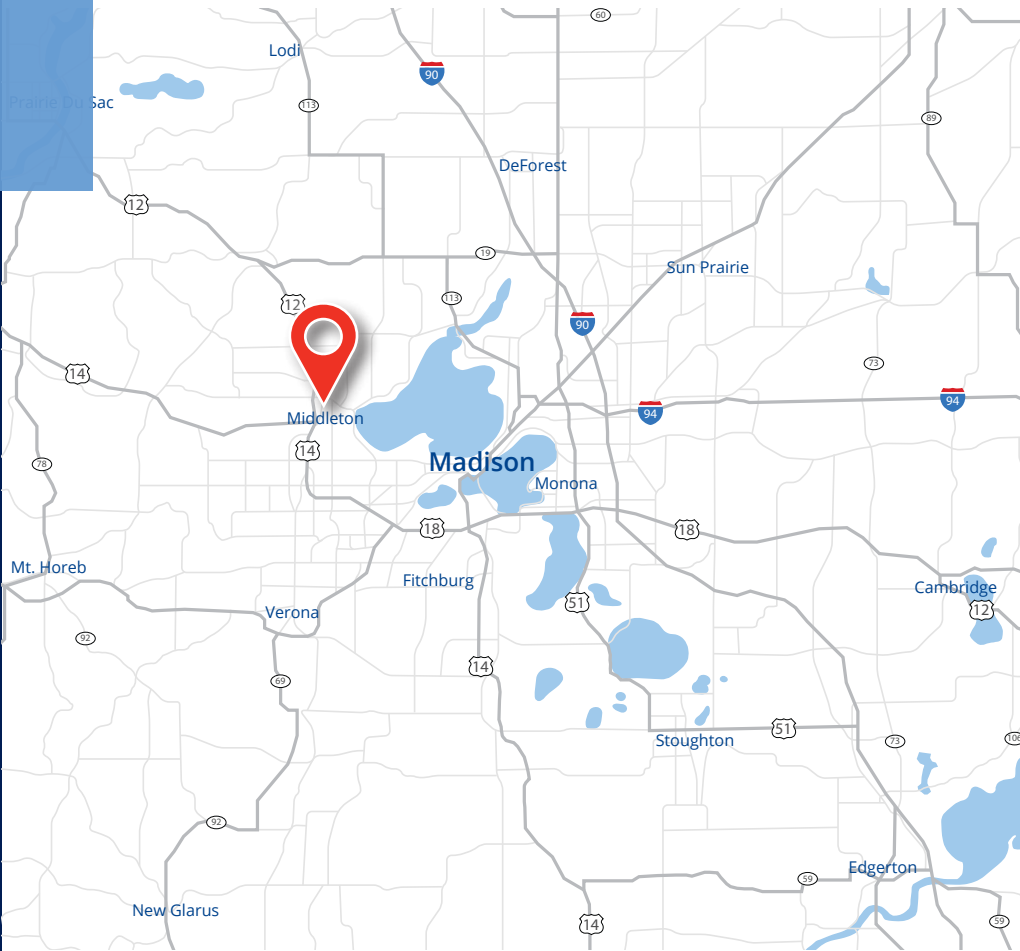
## Contact Us:

**Chris Richards**  
Partner  
+1 608 628 5895  
chris.richards@colliers.com

**Colin McLandsborough**  
Real Estate Advisor  
+1 262 309 5597  
colin.mclandsborough@colliers.com

## Colliers | Wisconsin

316 W Washington Ave, suite 925  
Madison, WI 53703  
P: +1 608 826 9500  
colliers.com



Copyright © 2024 Colliers International. Information herein has been obtained from sources deemed reliable, however its accuracy cannot be guaranteed. The user is required to conduct their own due diligence and verification.