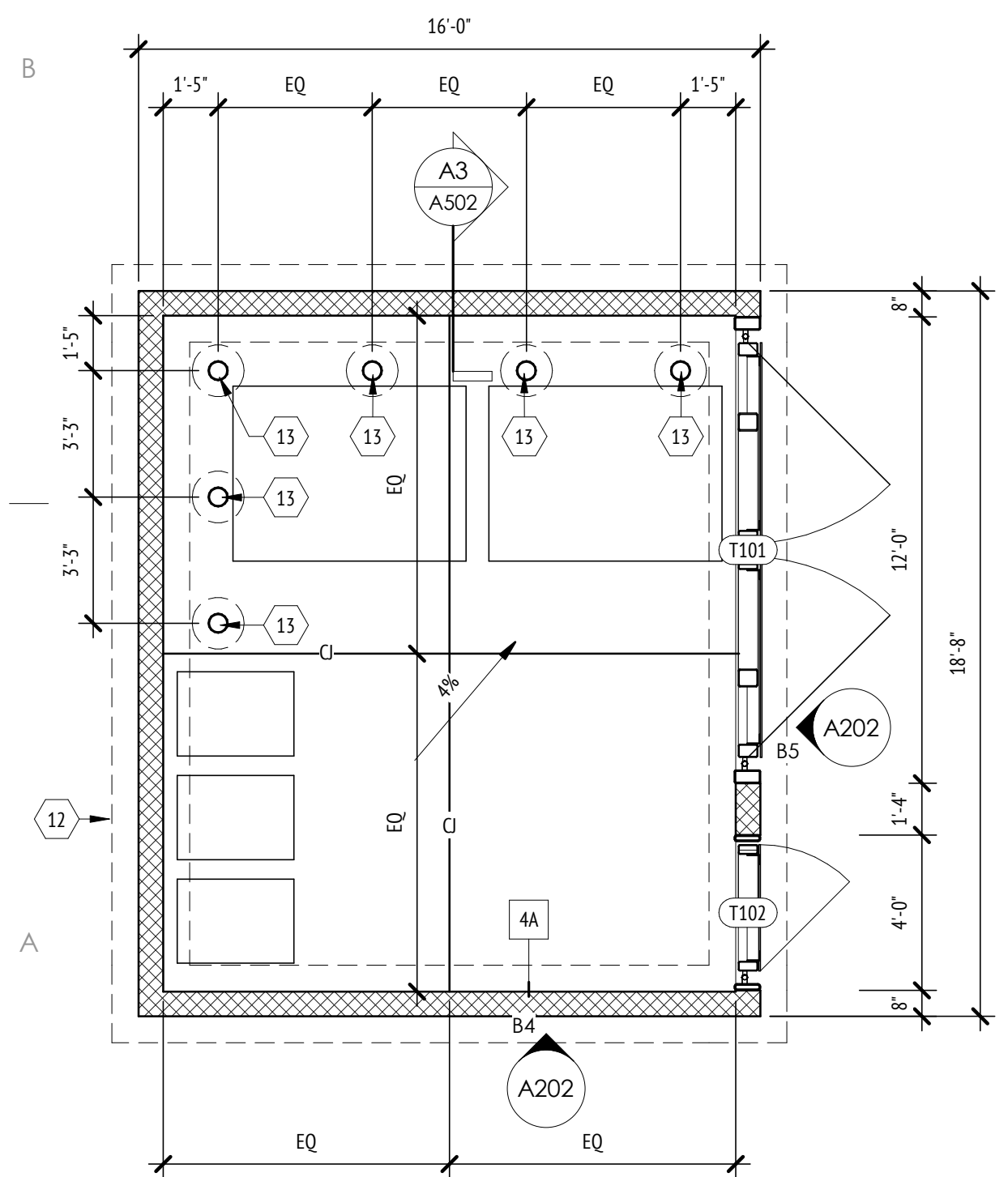
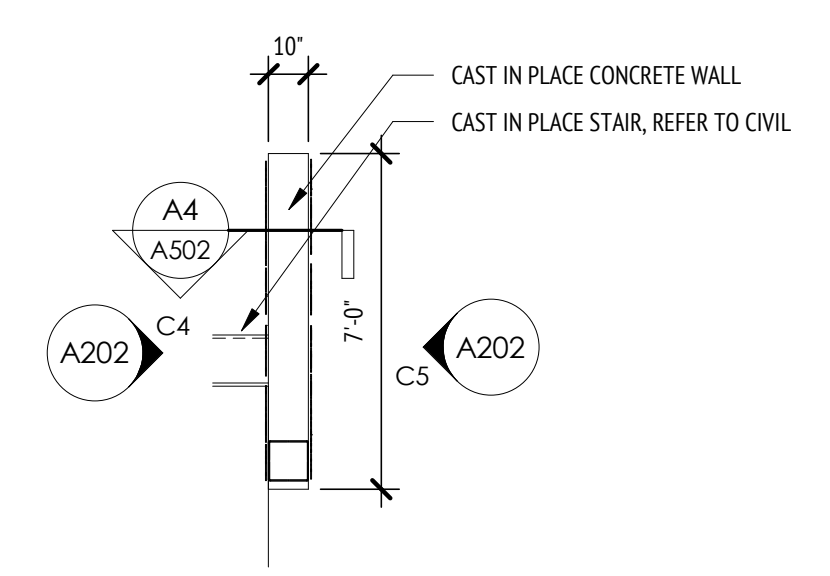


A1 1ST FLOOR
SCALE: 3/32" = 1'-0"



A2 TRASH ENCLOSURE
SCALE: 1/4" = 1'-0"



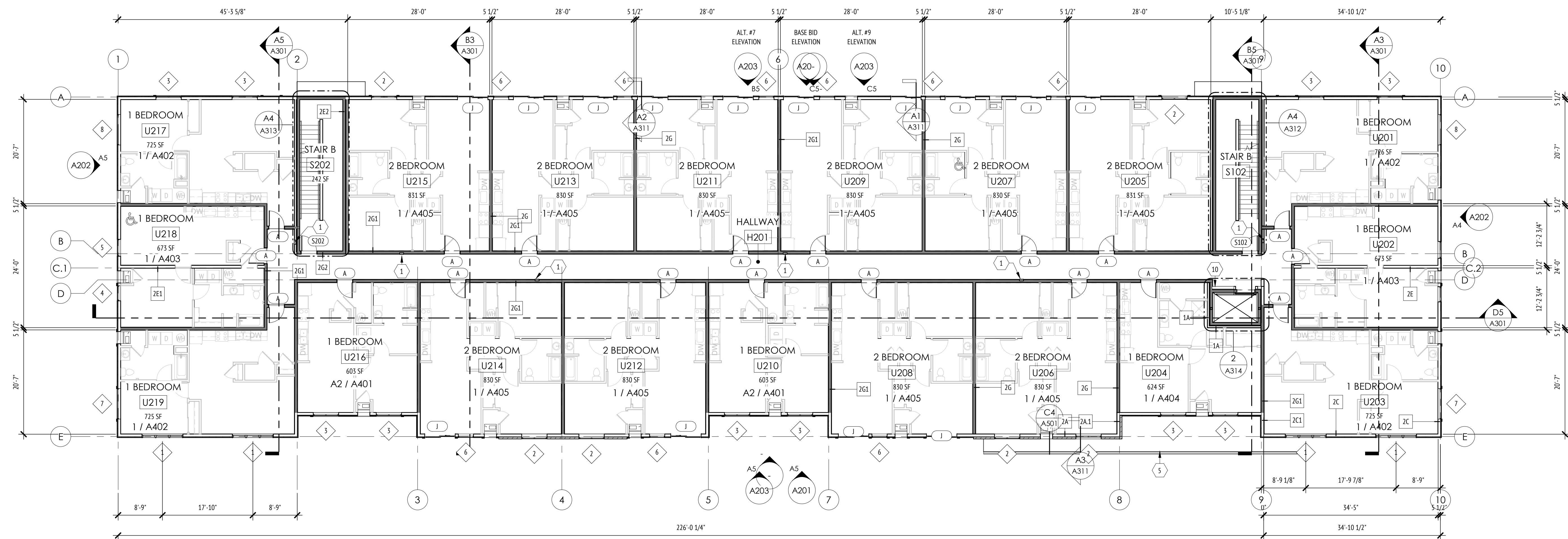
A3 MONUMENT SIGN PLAN
SCALE: 1/4" = 1'-0"

KEYED NOTES

- 1 FIRE EXTINGUISHER CABINET. FINAL LOCATION TO BE DETERMINED WITH FIRE MARSHALL. MAINTAIN REQUIRED FIRE RESISTANCE RATING OF WALL. REFER TO DETAIL ON SHEET.
- 2 FIRE DEPARTMENT CONNECTION. FINAL LOCATION TO BE APPROVED BY FIRE MARSHALL.
- 3 KNOX BOX. FINAL LOCATION TO BE APPROVED BY FIRE MARSHALL.
- 4 CANOPY ABOVE.
- 9 ACCENT WALL. REFER TO COMMON AREAS ROOM FINISH SCHEDULE FOR PAINT TYPE.
- 10 LOCATION FOR TWO WAY COMMUNICATION SYSTEM INSTALLED PER IBC SECTION 1009.8. FINAL LOCATION TO BE APPROVED BY FIRE MARSHALL. PROVIDE SIGNAGE INDICATING DIRECTIONS FOR USE OF THE TWO-WAY COMMUNICATION SYSTEM, DIRECTIONS FOR SUMMONING ASSISTANCE VIA THE TWO-WAY COMMUNICATION SYSTEM, AND IDENTIFICATION FOR THE LOCATION OF THE SYSTEM ADJACENT TO THE SYSTEM. SIGNAGE SHALL COMPLY WITH ICC A117.1 REQUIREMENTS FOR VISUAL CHARACTERS.
- 11 SHEATHING TO BE CONTINUOUS TO FACE OF WALL.
- 12 LINE OF FOOTING BELOW.
- 13 BOLLARD. REFER TO CIVIL DRAWINGS FOR DETAILS.

FLOOR PLAN GENERAL NOTES

1. REFER TO A002 FOR UNIT ACCESSIBILITY REQUIREMENTS.
2. WALLS WITH DARK GREY HATCH () ARE RATED, TYPICAL. REFER TO C102 FOR FIRE RESISTANCE RATING AND TYPE. REFER TO A002 FOR WALL TYPES AND ADDITIONAL ASSEMBLY REQUIREMENTS.
3. SMOKE ALARMS ARE TO BE INSTALLED PER ALL APPLICABLE BUILDING CODES AND ORDINANCES.



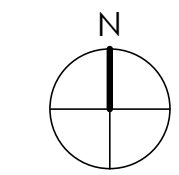
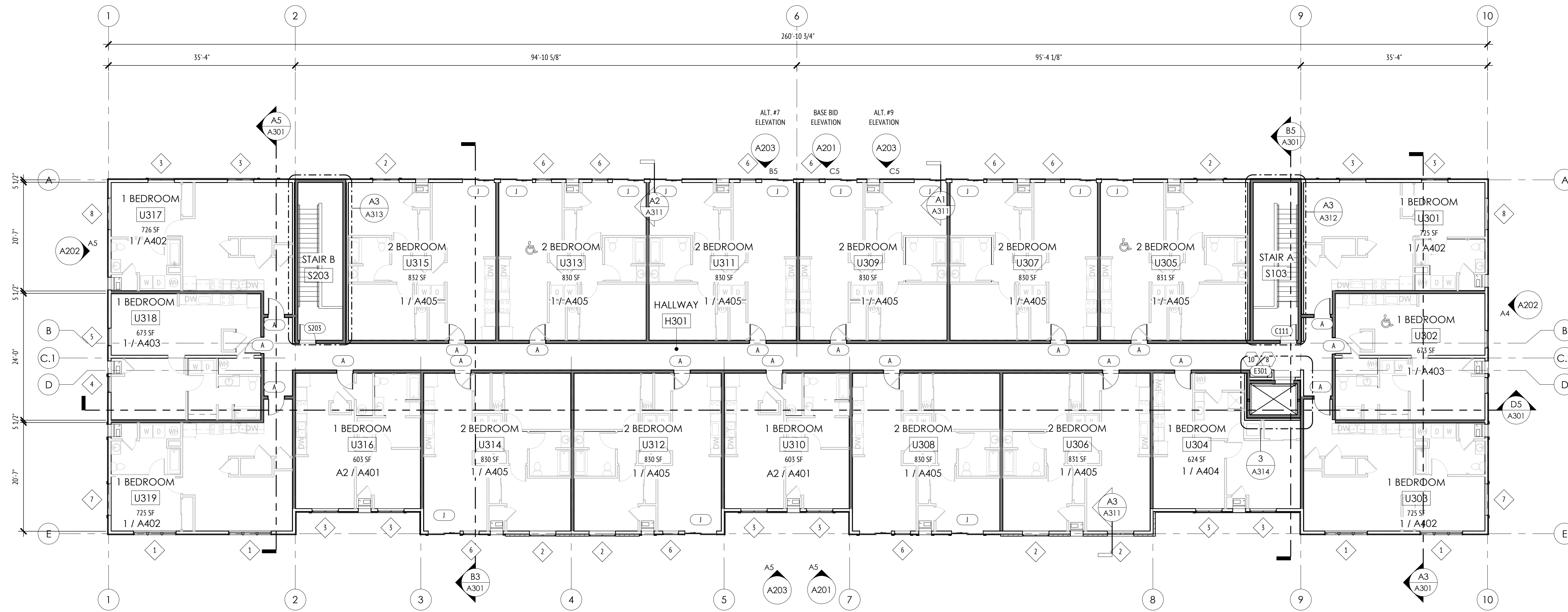
1 2ND FLOOR
SCALE: 3/32" = 1'-0"

KEYED NOTES

- 1 FIRE EXTINGUISHER CABINET. FINAL LOCATION TO BE DETERMINED WITH FIRE MARSHALL. MAINTAIN REQUIRED FIRE RESISTANCE RATING OF WALL. REFER TO DETAIL ON SHEET _____
- 5 ROOF BELOW
- 10 LOCATION FOR TWO WAY COMMUNICATION SYSTEM INSTALLED PER IBC SECTION 1009.8. FINAL LOCATION TO BE APPROVED BY FIRE MARSHALL. PROVIDE SIGNAGE INDICATING DIRECTIONS FOR USE OF THE TWO-WAY COMMUNICATION SYSTEM, DIRECTIONS FOR SUMMONING ASSISTANCE VIA THE TWO-WAY COMMUNICATION SYSTEM, AND IDENTIFICATION FOR THE LOCATION OF THE SYSTEM ADJACENT TO THE SYSTEM. SIGNAGE SHALL COMPLY WITH ICC A117.1 REQUIREMENTS FOR VISUAL CHARACTERS.

FLOOR PLAN GENERAL NOTES

- 1 REFER TO A002 FOR UNIT ACCESSIBILITY REQUIREMENTS.
- 2 WALLS WITH DARK GREY HATCH (██████) ARE RATED, TYPICAL REFER TO G102 FOR FIRE RESISTANCE RATING AND TYPE. REFER TO A002 FOR WALL TYPES AND ADDITIONAL ASSEMBLY REQUIREMENTS.
- 3 SMOKE ALARMS ARE TO BE INSTALLED PER ALL APPLICABLE BUILDING CODES AND ORDINANCES.



1 3RD FLOOR
SCALE: 3/32" = 1'-0"

KEYED NOTES

- 8 PROVIDE FIRE RESISTANCE RATING AT ELEVATOR CONTROLLER CABINET. REFER TO DETAIL.
- 10 LOCATION FOR TWO WAY COMMUNICATION SYSTEM INSTALLED PER IBC SECTION 1009.8. FINAL LOCATION TO BE APPROVED BY FIRE MARSHALL. PROVIDE SIGNAGE INDICATING DIRECTIONS FOR USE OF THE TWO-WAY COMMUNICATION SYSTEM. DIRECTIONS FOR SUMMONING ASSISTANCE VIA THE TWO-WAY COMMUNICATION SYSTEM, AND IDENTIFICATION FOR THE LOCATION OF THE SYSTEM ADJACENT TO THE SYSTEM. SIGNAGE SHALL COMPLY WITH ICC A117.1 REQUIREMENTS FOR VISUAL CHARACTERS.

FLOOR PLAN GENERAL NOTES

- 1 REFER TO A002 FOR UNIT ACCESSIBILITY REQUIREMENTS.
- 2 WALLS WITH DARK GREY HATCH () ARE RATED, TYPICAL. REFER TO G102 FOR FIRE RESISTANCE RATING AND TYPE. REFER TO A002 FOR WALL TYPES AND ADDITIONAL ASSEMBLY REQUIREMENTS.
- 3 SMOKE ALARMS ARE TO BE INSTALLED PER ALL APPLICABLE BUILDING CODES AND ORDINANCES.